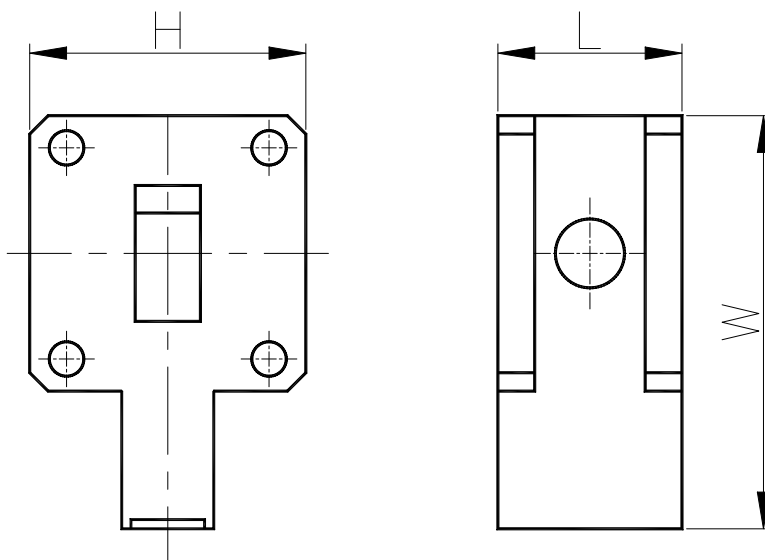


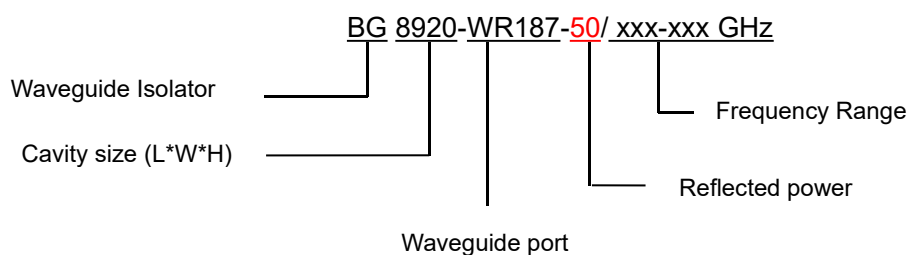
4.0 to 6.0GHz Waveguide Isolator

BG8920-WR187

Outline Drawing (mm): 



Order Examples:



Basic Specifications:

Impedance	50 Ω
Connector Type	WR187
Size(mm)	88.9*200.0*63.5 (As shown in the figure)
Operating Temp	-40~+80 °C

Specifications:

Model No. (X=1: →Clockwise) (X=2: ←Anticlockwise)	Freq. Range GHz	bandwidth	IL. dB (max)	Isolation dB (min)	VSWR (max)
BG8920-WR187/4.0-6.0GHz	4.0-6.0	10%	0.25	23.0	1.15
		20%	0.30	20.0	1.20

Instructions:

1, If you do not have the frequency you want, please contact us !