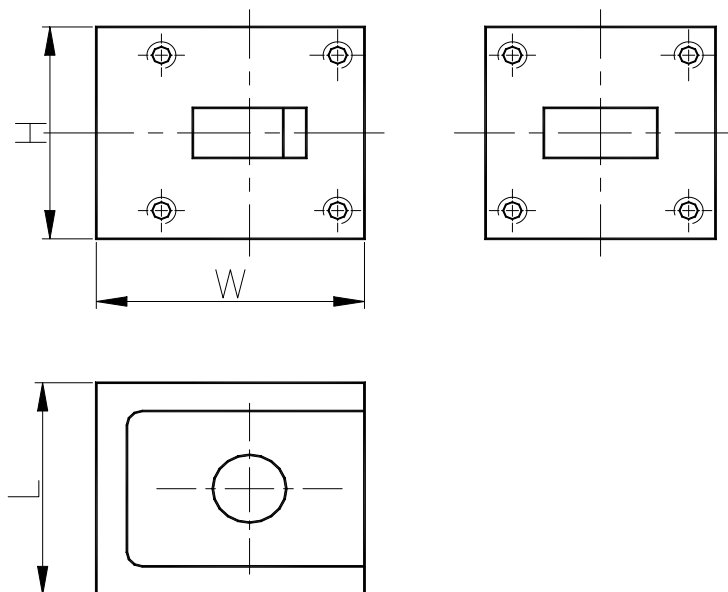


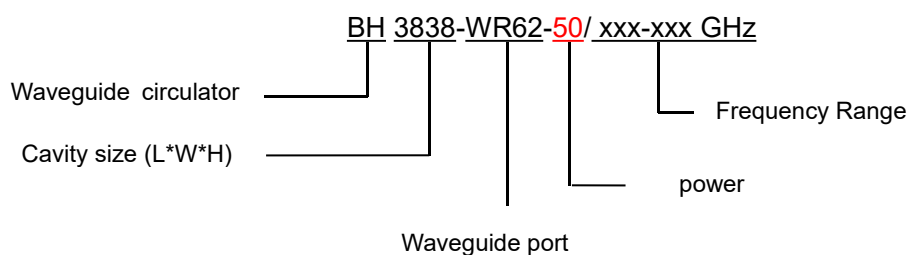
## 12.0-18.0GHz Waveguide Circulator

BH3838-WR62

Outline Drawing (mm): 



Order Examples:



Basic Specifications:

Impedance	50 $\Omega$
Connector Type	WR62
Size(mm)	38*38*33 (As shown in the figure)
Operating Temp	-40~+80 $^{\circ}\text{C}$

### Specifications:

Model No. (X=1: →Clockwise) (X=2: ←Anticlockwise)	Freq. Range GHz	bandwidth	IL. dB (max)	Isolation dB (min)	VSWR (max)
BH3838-WR62/12.0-18.0GHz	12.0-18.0	10%	0.30	23.0	1.15
BH3838-WR62/15.0-18.0GHz	15.0-18.0	FULL	0.40	20.0	1.25

### Instructions:

1, If you do not have the frequency you want, please contact us!