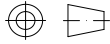
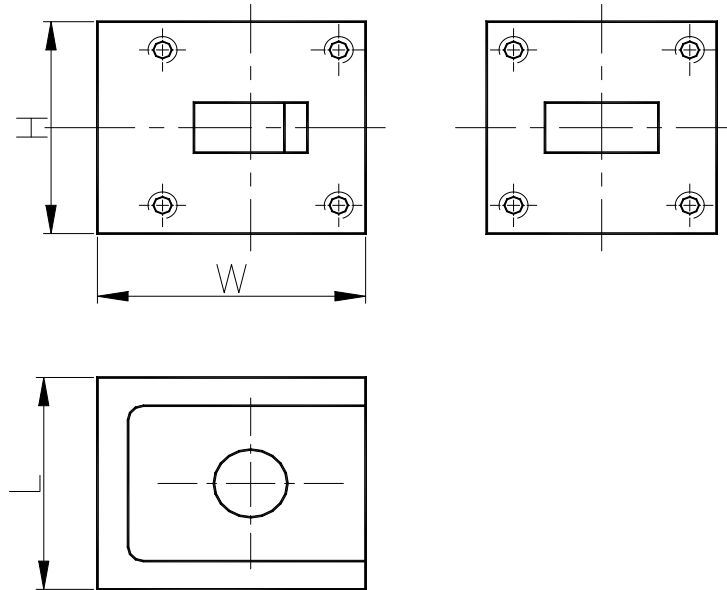


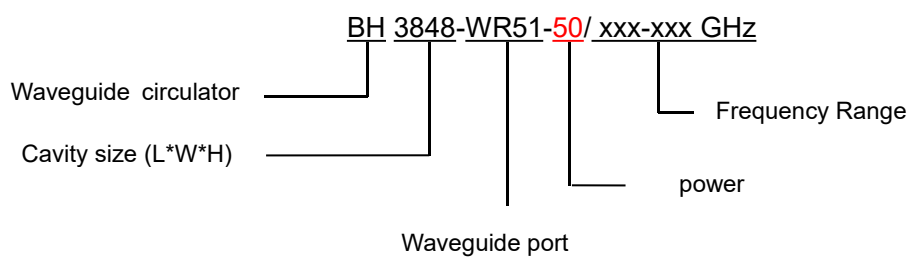
14.5-22.0GHz Waveguide Circulator

BH3848-WR51

Outline Drawing (mm): 



Order Examples:



Basic Specifications:

Impedance	50 Ω
Connector Type	WR51
Size(mm)	48*38*33.3 (As shown in the figure)
Operating Temp	-40~+80 °C



Specifications:

Model No. (X=1: →Clockwise) (X=2: ←Anticlockwise)	Freq. Range GHz	bandwidth	IL. dB (max)	Isolation dB (min)	VSWR (max)
BH3848-WR51/14.5-22.0GHz	14.5-22.0	5%	0.30	25.0	1.12
		10%	0.30	23.0	1.15

Instructions:

1, If you do not have the frequency you want, please contact us!