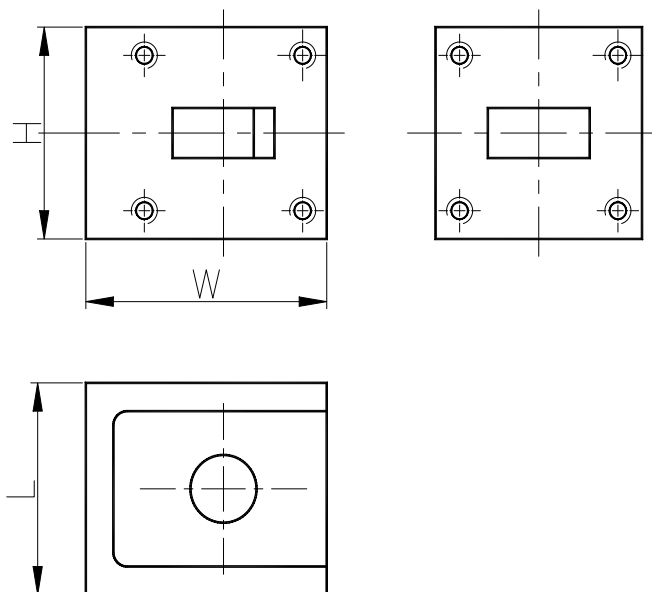


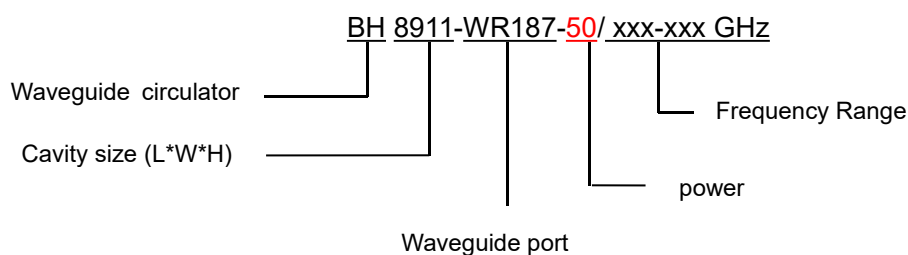
4.0-6.0GHz Waveguide circulator

BH8911-WR187

Outline Drawing (mm): 



Order Examples:



Basic Specifications:

Impedance	50 Ω
Connector Type	WR187
Size(mm)	110*88.9*63.5 (As shown in the figure)
Operating Temp	-40~+80 $^{\circ}\text{C}$



Specifications:

Model No. (X=1: →Clockwise) (X=2: ←Anticlockwise)	Freq. Range GHz	bandwidth	IL. dB (max)	Isolation dB (min)	VSWR (max)
BH8911-WR187/4.0-6.0GHz	4.0-6.0	10%	0.30	23.0	1.15

Instructions:

1, If you do not have the frequency you want, please contact us!