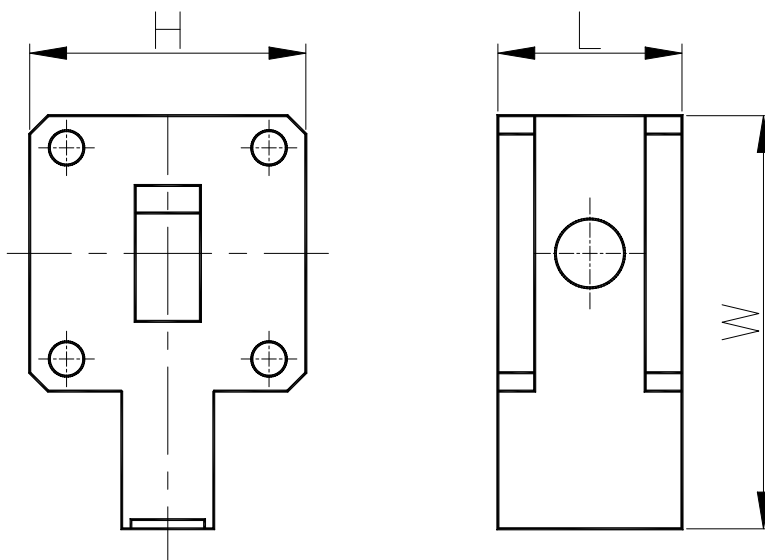


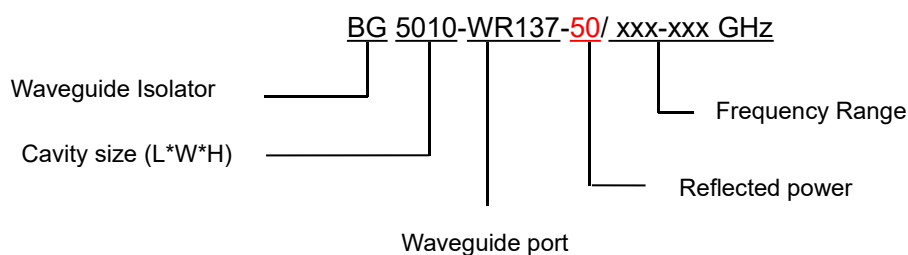
6.8-7.5GHz Waveguide Isolator

BG5010-WR137

Outline Drawing (mm): 



Order Examples:



Basic Specifications:

Impedance	50 Ω
Connector Type	WR137
Size(mm)	100*50*49.2 (As shown in the figure)
Operating Temp	-30~+70 $^{\circ}\text{C}$



Specifications:

Model No. (X=1: →Clockwise) (X=2: ←Anticlockwise)	Freq. Range GHz	bandwidth	IL. dB (max)	Isolation dB (min)	VSWR (max)
BG5010-WR137-20/6.8-7.5GHz	6.8-7.5	20%	0.30	20.0	1.25

Instructions:

1, If you do not have the frequency you want, please contact us!