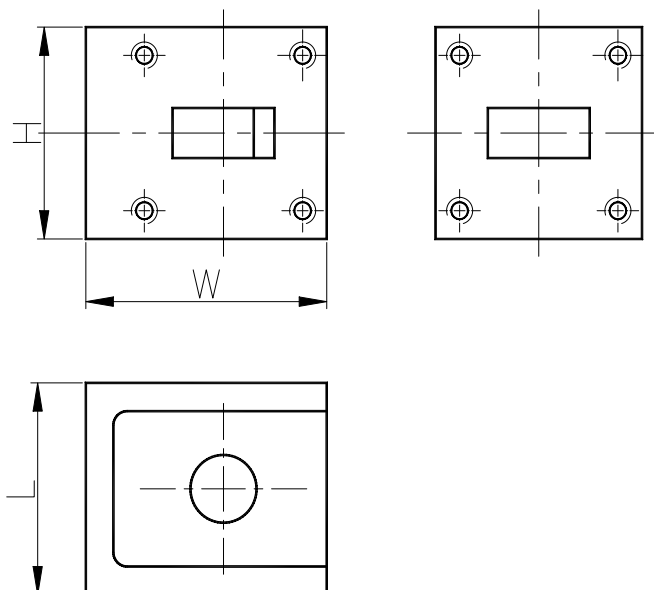


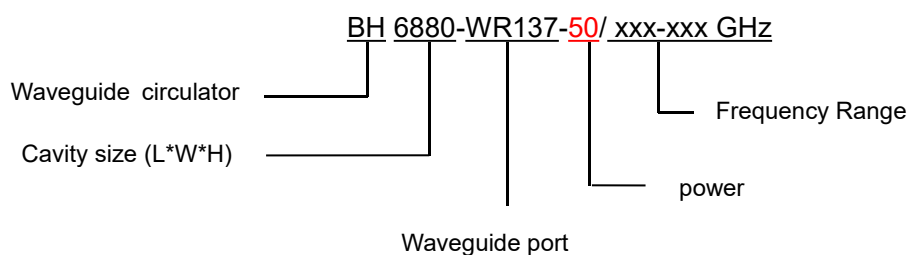
5.4-8.0GHz Waveguide Circulator

BH6880-WR137

Outline Drawing (mm): 



Order Examples:



Basic Specifications:

Impedance	50 Ω
Connector Type	WR137
Size(mm)	80*68.3*49.2 (As shown in the figure)
Operating Temp	-40~+70 $^{\circ}\text{C}$



Specifications:

Model No. (X=1: →Clockwise) (X=2: ←Anticlockwise)	Freq. Range GHz	bandwidth	IL. dB (max)	Isolation dB (min)	VSWR (max)
BH6880-WR137/5.4-8.0GHz	5.4-8.0	20%	0.25	25.0	1.12

Instructions:

1, If you do not have the frequency you want, please contact us!