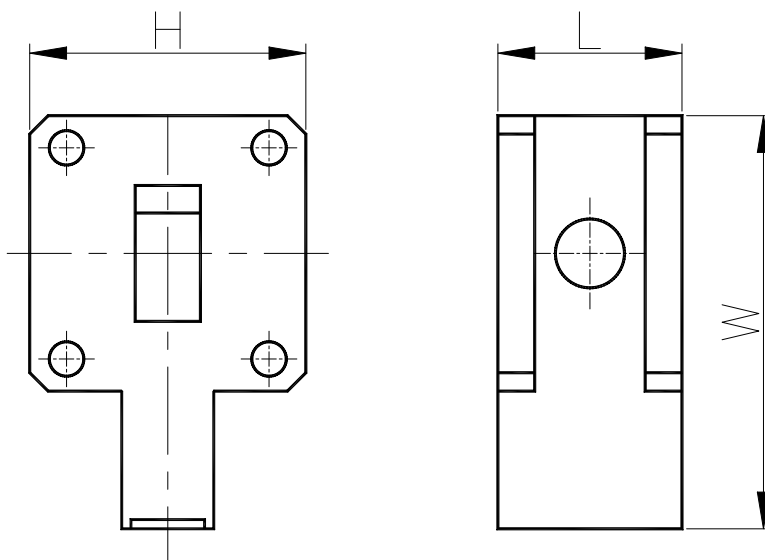


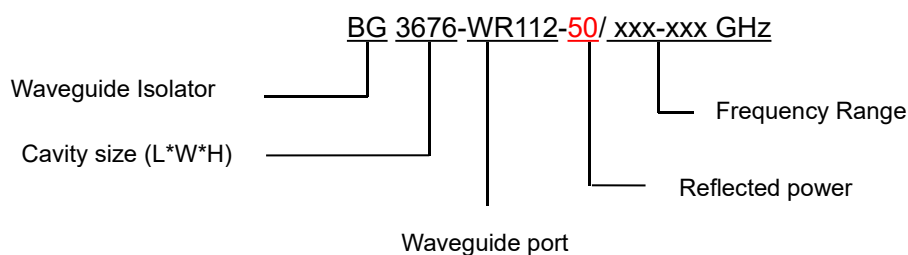
## 7.0-10.0GHz Waveguide Isolator

BG3676-WR112

Outline Drawing (mm): 



Order Examples:



Basic Specifications:

Impedance	50 $\Omega$
Connector Type	WR112
Size(mm)	76*36*48 (As shown in the figure)
Operating Temp	-40~+80 $^{\circ}\text{C}$

### Specifications:

Model No. (X=1: →Clockwise) (X=2: ←Anticlockwise)	Freq. Range GHz	bandwidth	IL. dB (max)	Isolation dB (min)	VSWR (max)
BG3676-WR112/7.0-10.0GHz	7.0-10.0	10%	0.30	23.0	1.20
BG3676-WR112/7.4-8.5GHz	7.4-8.5	FULL	0.30	23.0	1.20
BG3676-WR112/7.9-8.5GHz	7.9-8.5	FULL	0.25	25.0	1.15

### Instructions:

1, If you do not have the frequency you want, please contact us!