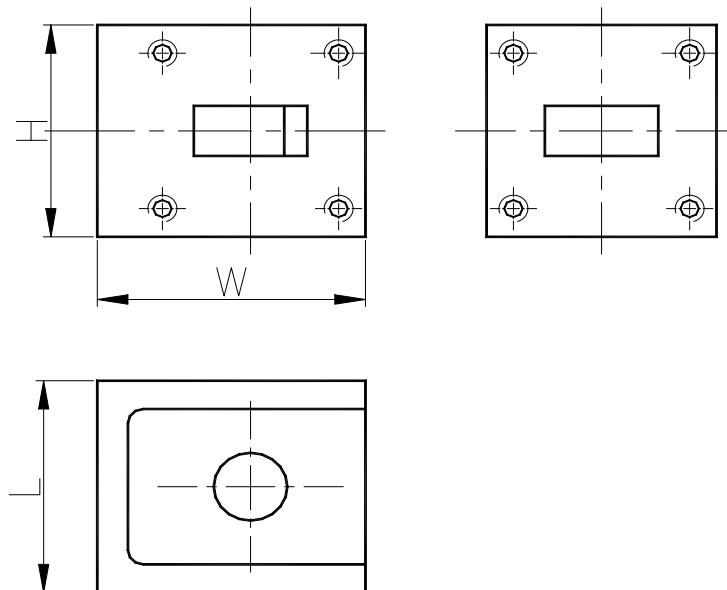


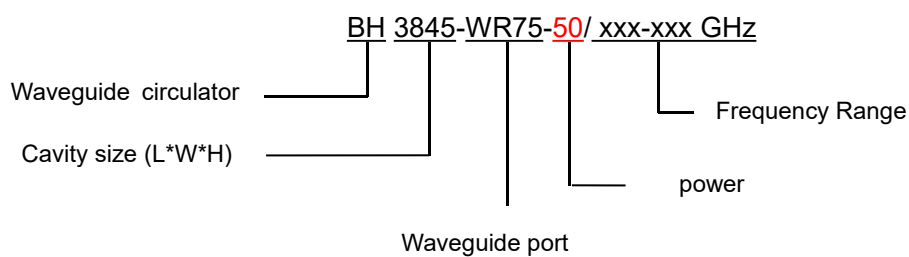
## 10.0-15.0GHz Waveguide Circulator

BH3845-WR75

Outline Drawing (mm): 



Order Examples:



Basic Specifications:

Impedance	50 $\Omega$
Connector Type	WR75
Size(mm)	45*38*38 (As shown in the figure)
Operating Temp	-40~+80 $^{\circ}\text{C}$

### Specifications:

Model No. (X=1: →Clockwise) (X=2: ←Anticlockwise)	Freq. Range GHz	bandwidth	IL. dB (max)	Isolation dB (min)	VSWR (max)
BH3845-WR75/10.0-15.0GHz	10.0-15.0	10%	0.25	25.0	1.12
		20%	0.25	23.0	1.15

### Instructions:

1, If you do not have the frequency you want, please contact us!