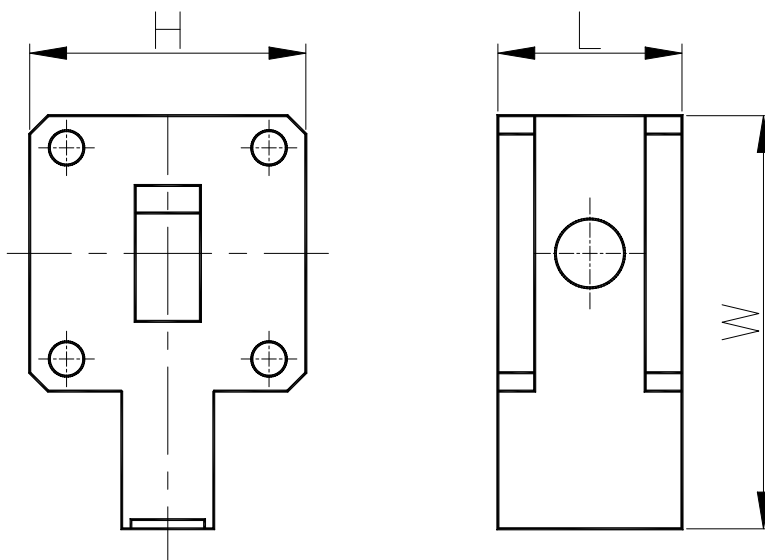


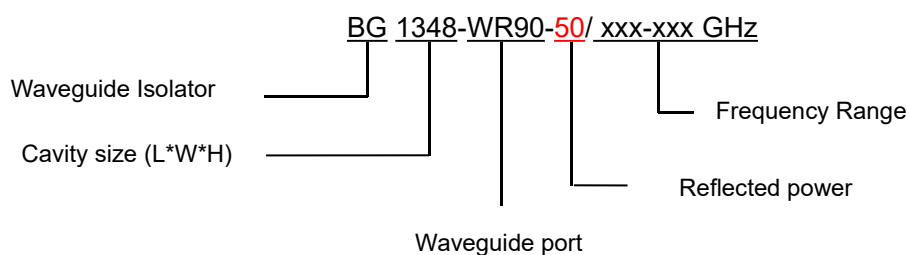
8.0-12.4GHz Waveguide Isolator

BG1348-WR90

Outline Drawing (mm): 



Order Examples:



Basic Specifications:

Impedance	50 Ω
Connector Type	WR90
Size(mm)	48.5*12.7*42 (As shown in the figure)
Operating Temp	-40~+80 °C



Specifications:

Model No. (X=1: →Clockwise) (X=2: ←Anticlockwise)	Freq. Range GHz	bandwidth	IL. dB (max)	Isolation dB (min)	VSWR (max)
BG1348-WR90/8.0-12.4GHz	8.0-12.4	200M	0.30	25.0	1.20
		300M	0.40	23.0	1.25

Instructions:

1, If you do not have the frequency you want, please contact us!