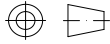
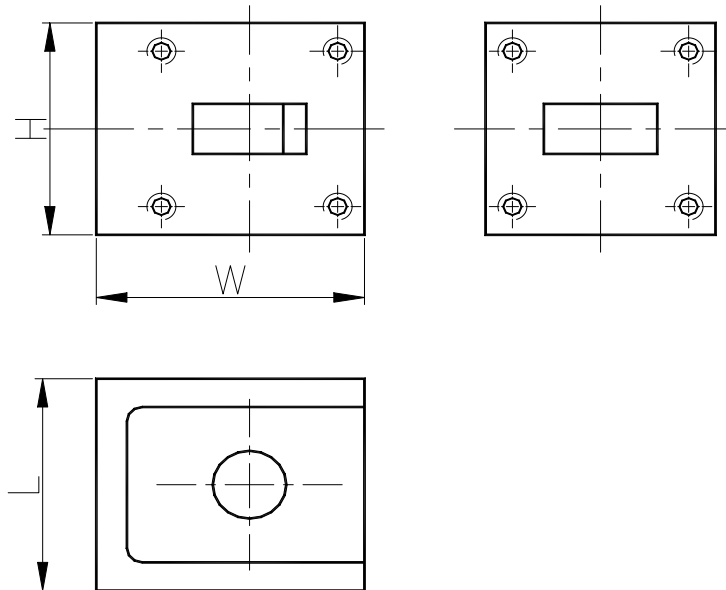


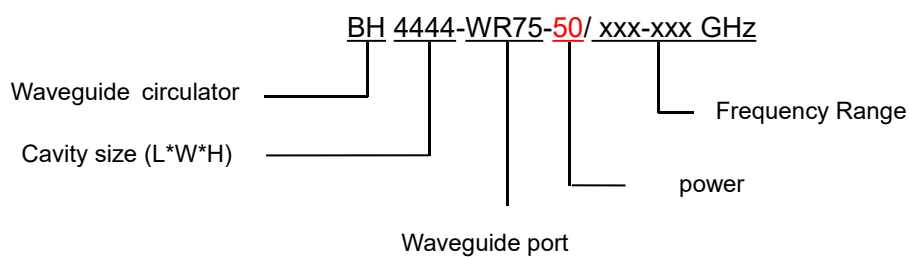
## 10.0-15.0GHz Waveguide Circulator

BH4444-WR75

Outline Drawing (mm): 



Order Examples:



Basic Specifications:

Impedance	50 Ω
Connector Type	WR75
Size(mm)	44.5*44.5*38.0 (As shown in the figure)
Operating Temp	-30~+75℃

### Specifications:

Model No. (X=1: →Clockwise) (X=2: ←Anticlockwise)	Freq. Range GHz	bandwidth	IL. dB (max)	Isolation dB (min)	VSWR (max)
BH4444-WR75/10.0-15.0GHz	10.0-15.0	5%	0.25	25.0	1.12
		10%	0.25	23.0	1.15
BH4444-WR75/13.9-14.6GHz	13.9-14.6	FULL	0.30	23.0	1.20
BH4444-WR75/14.0-15.0GHz	14.0-15.0	FULL	0.30	23.0	1.20

### Instructions:

1, If you do not have the frequency you want, please contact us!